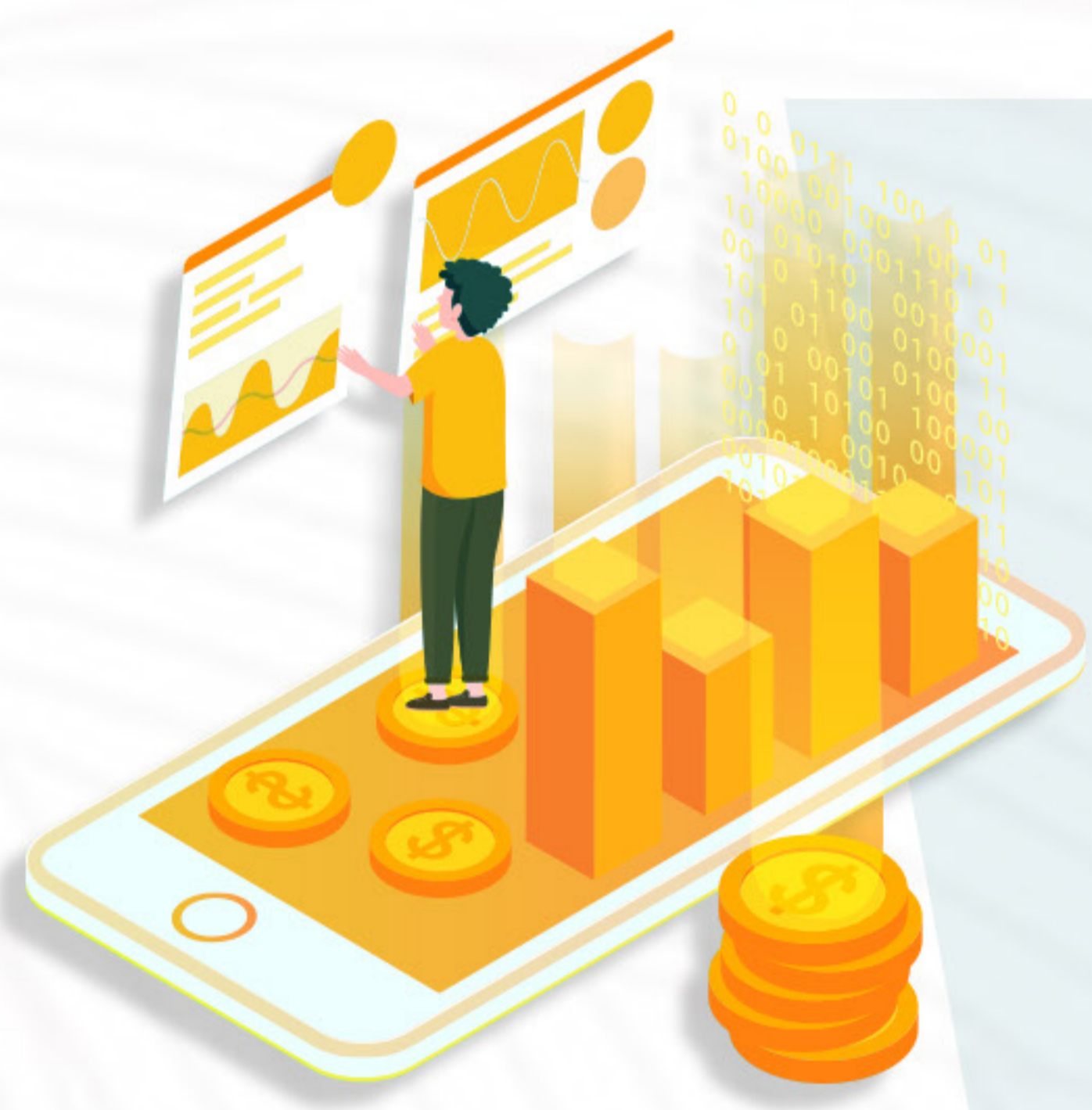


# CHOOSE CWG for stock CFD trading

## MARGIN TRADING

**Margin trading**, margin = price \* contract amount \* margin ratio  
For example, the current price of Tesla TSLA is 540, the margin ratio of contract volume 10 is 0.1, and the margin calculation is as follows:  
 $540 * 10 * 0.1 = 540 \text{USD}$



## LEVERAGE TRADING

**Leverage trading**, you can choose the number of shares you want to buy or sell, just pay a part of the total transaction amount to open a position, and CWG will pay most of the remaining funds.



## PRICE DIFFERENCE TRADING

**Price difference trading**, you can use the price difference contract to trade stocks, taking the rise and fall of stocks as the target. The CFD short-selling function of CWG stock makes the down market as good as the rise market!



## STRICT REGULATION

**Strict regulation**. In the operation and management of CWG markets, we always strictly require ourselves with global regulatory regulations. CWG meets strict financial standards and regularly reports to our regulators as required.



## CAPITAL SECURITY

**Capital security**, customer funds deposited in segregated bank, safe custody, safe deposit and withdrawal, rapid deposit and withdrawal, CWG markets has never failed to meet!

SYMBOL	DESCRIPTION	MIN LOT SIZE	MAX LOT SIZE	MARGIN RATE
ABBV	AbbVie Inc	1	100	0.15
ABT	Abbott Laboratories	1	110	0.1
ACN	Accenture Plc	1	40	0.15
AEP	American Electric Power	1	90	0.1
AFL	Aflac Inc	1	180	0.1
AGN	Allergan Plc	1	40	0.1
AIG	American International Group	1	180	0.1
ALL	Allstate Corp	1	70	0.1
AMT	American Tower Corp	1	30	0.15
ANTM	Anthem Inc	1	30	0.1
AON	Aon Plc	1	40	0.15
APD	Air Products & Chemicals Inc	1	30	0.15
AVB	AvalonBay Communities Inc	1	40	0.15
AXP	American Express Co	1	70	0.05
BA	Boeing Co	1	20	0.05
BABA	Alibaba Group Holding Ltd (ADRs)	1	40	0.05
BAC	Bank of America Corp	1	280	0.05
BAX	Baxter International Inc	1	100	0.1
BBT	BB&T Corp	1	180	0.1
BD	Becton Dickinson & Co	1	30	0.15
BK	Bank of New York Mellon Corp	1	210	0.1
BLK	Blackrock Inc	1	10	0.1
BMY	Bristol-Myers Squibb Co	1	140	0.1
BRKB	Berkshire Hathaway Inc - Class B	1	40	0.05
BSX	Boston Scientific Corp	1	230	0.1
BX	Blackstone Group Inc	1	150	0.2
C	Citigroup Inc	1	120	0.1
CAT	Caterpillar Inc	1	70	0.05
CB	Chubb Ltd	1	60	0.1
CCI	Crown Castle Intl Corp	1	60	0.15
CI	Cigna Corp	1	40	0.1
CL	Colgate-Palmolive Co	1	130	0.15
COF	Capital One Financial Corp	1	90	0.1
COG	Cabot Oil & Gas Corp	1	670	0.15
COP	ConocoPhillips	1	170	0.1
CRM	Salesforce.com Inc	1	50	0.1
CSX	CSX Corp	1	120	0.1
CTL	CenturyLink Inc	1	660	0.15
CVS	CVS Health Corp	1	130	0.1
CVX	Chevron Corp	1	80	0.05
D	Dominion Energy Inc	1	110	0.1
DAL	Delta Air Lines Inc	1	170	0.1
DD	DuPont de Nemours Inc	1	190	0.05
DE	Deere & Co	1	50	0.1
DELL	Dell Technologies Inc	1	190	0.1
DG	Dollar General Corp	1	60	0.2
DHR	Danaher Corp	1	60	0.15
DIS	The Walt Disney Co	1	70	0.1
DOW	Dow Inc	1	200	0.05
DUK	Duke Energy Corp	1	100	0.1
DVN	Devon Energy Corp	1	440	0.1
ECL	Ecolab Inc	1	40	0.15
ED	Consolidated Edison Inc	1	100	0.15
EL	ESTÉE LAUDER COMPANIES	1	40	0.15
EMR	Emerson Electric Co	1	130	0.1
EOG	EOG Resources Inc	1	130	0.1
EPD	Enterprise Products Partners LP	1	380	0.2
EQR	Equity Residential	1	110	0.15
ETN	Eaton Corp Plc	1	90	0.15
EW	Edwards Lifesciences Corp	1	40	0.2
EXC	Exelon Corp	1	200	0.1
F	Ford Motor Co	1	1230	0.1
FCAU	Fiat Chrysler Automobiles NV	1	750	0.15
FCX	Freeport-McMoRan Inc / FCX	1	800	0.1
FDX	FedEx Corp	1	60	0.1
FIS	Fidelity National Info Services Inc / FIS	1	60	0.15
GD	General Dynamics Corp	1	50	0.1
GE	General Electric Co	1	770	0.1
GIS	General Mills Inc	1	180	0.1
GM	General Motors Co	1	280	0.1
GPN	Global Payments Inc	1	40	0.15
GPS	Gap Inc	1	560	0.15
GS	Goldman Sachs Group Inc	1	40	0.1
HAL	Halliburton Co	1	460	0.1
HCA	HCA Healthcare Inc	1	60	0.15
HD	Home Depot Inc	1	40	0.05
HON	Honeywell International Inc	1	50	0.1
HPE	Hewlett Packard Enterprise Co / HPE	1	670	0.15
HPQ	HP Inc	1	440	0.05
HRB	H&R Block Inc	1	450	0.15
HST	Host Hotels & Resorts Inc	1	590	0.15
HSY	Hershey Co	1	60	0.1
HUM	Humana Inc	1	20	0.1
IBM	International Business Machines Corp	1	60	0.05
ICE	Intercontinental Exchange Inc / ICE	1	100	0.1
ITW	Illinois Tool Works / ITW	1	50	0.15
JCI	Johnson Controls International Plc	1	240	0.1
JNJ	Johnson & Johnson	1	60	0.05
JPM	JPMorgan Chase & Co	1	70	0.05
KDP	Keurig Dr Pepper Inc	1	340	0.15
KEY	KeyCorp	1	500	0.1
KKR	KKR & Co Inc	1	290	0.15

<b>CURRENCY</b>	<b>USD</b>	<b>DECIMAL PLACE</b>	<b>2</b>
<b>CONTRACT SIZE</b>	<b>10</b>	<b>TICKSIZE</b>	<b>0.01</b>

**Trading Hours in GMT +3**  
**US Shares / Mon-Fri/ Mon to Fri 16:30-23:00**

**Maximum lot size for US Shares is based on order size is 100,000 USD Nominal**  
**The maximum lot size for US and HK shares will be calculated periodically and updated to MT5 as share prices move.**

**Margin: Price\*Volume\*Margin Rate**

